

# Rittal – The System.

Faster – better – everywhere.

## Digital Brochure

ENCLOSURES

POWER DISTRIBUTION

CLIMATE CONTROL

IT INFRASTRUCTURE

SOFTWARE & SERVICES

FRIEDHELM LOH GROUP

[www.rittal.ca](http://www.rittal.ca)



# Rittal – The System.

Faster – better – everywhere.



# Cooling Units

## Thermoelectric Cooler

Thermoelectric Cooler.....	341 BTU.....	262
----------------------------	--------------	-----

## Wall-Mounted Cooling Units

TopTherm, Horizontal Format .....	1024 BTU .....	263
TopTherm.....	1024 BTU.....	264
TopTherm Blue e .....	1706 BTU .....	265
TopTherm Blue e .....	2559 BTU.....	266
TopTherm Blue e .....	3412 BTU .....	267
TopTherm Blue e .....	5118 BTU.....	269
TopTherm Blue e .....	6824 BTU .....	270
TopTherm Blue e .....	8530 BTU.....	271
TopTherm Blue e .....	13649 BTU.....	272
TopTherm Blue e, Slimline .....	5118 BTU.....	273
TopTherm Blue e, UL Type 3R.....	1024 – 1706 BTU .....	274
TopTherm Blue e, UL Type 3R.....	3412 – 5118 BTU.....	275
TopTherm Blue e, UL Type 3R.....	6824 – 7506 BTU .....	276
TopTherm Blue e, NEMA 4X.....	1706 – 5118 BTU.....	277
TopTherm Blue e, NEMA 4X.....	6824 – 8530 BTU .....	278

## Roof-Mounted Cooling Units

TopTherm Blue e .....	1706 BTU .....	279
TopTherm Blue e .....	2559 BTU.....	280
TopTherm Blue e .....	3412 BTU .....	280
TopTherm Blue e .....	3753 – 5118 BTU.....	281
TopTherm Blue e .....	6824 BTU .....	282
TopTherm Blue e .....	10236 – 13649 BTU.....	283

## Modular Climate Control Concept

Blue e Cooling Module.....	5118/8530 BTU .....	284
Section Doors for Installing Cooling Modules .....		285



## “Blue e” Generation

**Continuous energy savings with cooling units from Rittal.**

Saving in energy consumption **up to 45%** with the same cooling output (in ideal conditions, 70% in comparison to a conventional Rittal TopTherm Plus cooling unit in field testing).



# Thermoelectric Cooler



Climate control accessories Page 305 Therm software package Page 321

**Unit material:**

- Aluminum, anodized

**Color of cover:**

- RAL 7024

**Protection category IP to IEC 60 529:**

- External circuit IP 34
- Internal circuit IP 54

**Supply includes:**

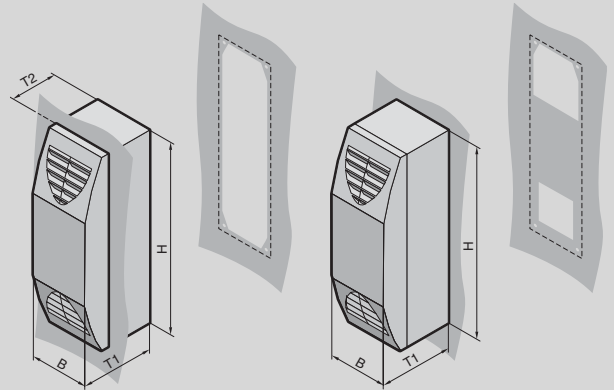
- Thermoelectric climate control unit
- Wired ready for connection (plug-in terminal strip)
- Mounting accessories
- Parameterization software

**Performance diagrams:**

Available on the Internet

**Technical details:**

Available on the Internet



## Total cooling output/heating output 341 BTU (100 W)

Model No.	Packs of	3201.200	3201.300	Page
Rated operating voltage V, ~, Hz		100 - 240, 1~, 50/60	24 (DC)	
<b>Total cooling output L35 L35 BTU (W)</b>		<b>341/341 (100/100)</b>	<b>341 (100)</b>	
<b>Heating output BTU (W)</b>		<b>341 (100)</b>	<b>341 (100)</b>	
Height (H) inches (mm)		16 (400)	16 (400)	
Width (B) inches (mm)		5 (125)	5 (125)	
Depth (T1) inches (mm)		6 (155)	6 (155)	
Installation depth (T2) inches (mm)		4 (100)	4 (100)	
Start-up current A		6.4	4.5	
Rated current max. A		1.9	4.5	
Pre-fuse A		4	10	
Operating temperature range		-22°F...+131°F	-22°F...+140°F	
Refrigeration factor/COP		1	1.2	
Power pack integrated		■	-	
Air throughput of fans (unimpeded air flow), internal circuit/external circuit cfm (m³/h)		29/29 (50/50)	29/29 (50/50)	
Weight lb (kg)		6.6 (3.0)	5.3 (2.4)	

**Accessories**

Accessories	Packs of	3201.050	3201.070	3301.606	Page
Spare Filter Mats	5 pc(s).	3201.050	3201.050		307
SK BUS System	1 pc(s).	3201.070	3201.070		318
Condensate Hose	1 pc(s).	3301.606	3301.606		313